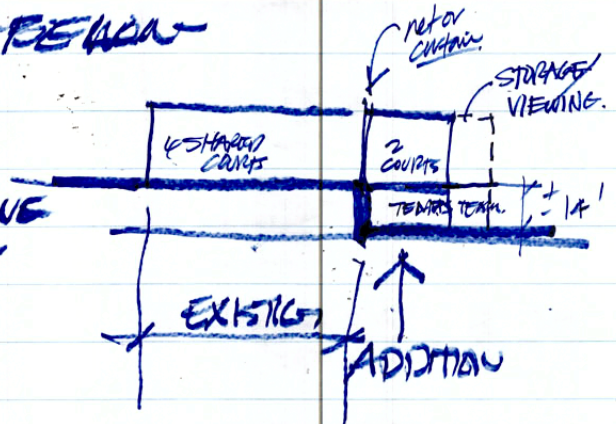


TENNIS

1 of 3

- + 2 COURTS A GOOD IDEA
- + ADEQUATE PARKING IN EVENINGS (OFF CAMPUS PEOPLE)
- + LOCATION / ADJACENCY IS GOOD
- + ALWAYS TAPPED
- + LIFE IDEA OF SPACE BEHIND

- 150 SPECTATORS TOO TIGHT
- NO DATA @ TO.
- ENTRY LOCATION NOT INTUITIVE
- UNSAFE ACCESS - WEST
- NO VIEWING AREAS
- NO TEAM ROOM
- LIMITED STORAGE
- LIMITED RESTROOM ACCESS / CUSTODIAL / EQUIP STOR



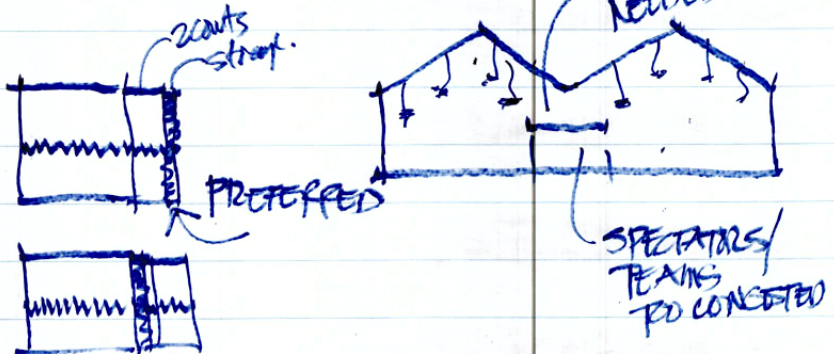
IDEAS

- IMPROVE ACCESS FROM SOUTH
- IMPROVE ACCESS TO STC
- ENTRY FROM FIELD LEVEL?
- IMPROVE APPEARANCE FROM EAST
- IMPROVE WEST ENTRY / ACCESSIBILITY

STORAGE:

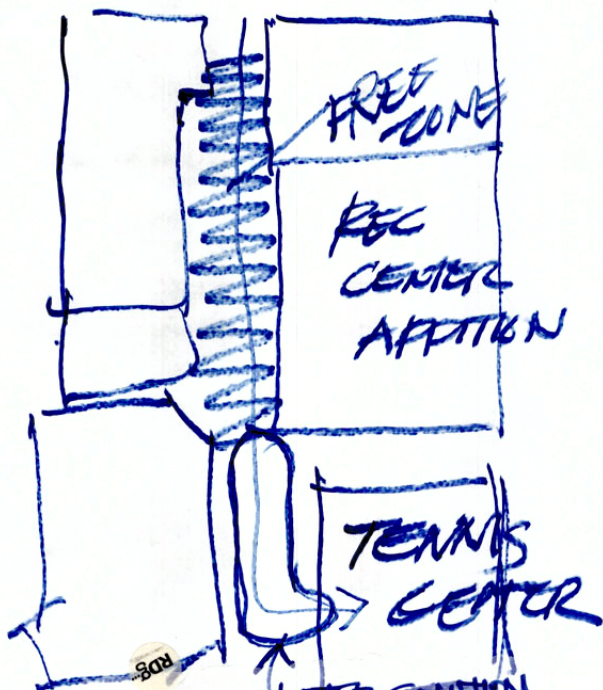
- PAW MACHINE
- EQUIP
- SLEEPER
- TENNIS TEAM STOR.

+ RESTROOMS



TENNIS

2 of 3



- LIGHTING

\$25,000 RETROFIT
IN NEEDED

SAFETY ISSUE

REPLACE AT TIME
OF ADDITION.
(EUBB ASSISTANCE)

BETTER SOLUTION
PHYSICAL CONNECTION PREFERRED

- NEED POWER

OFFICE

1 PERSON W/ LOCKER

DESK COMPUTER

- ENTRY GETS REALLY HOT - WEST SUN GLARE ISSUE
- MORE SPECTATOR SPACE
- STORAGE BEHIND CURTAIN.
- CURTAINS ARE WORN
- MORE GRAPHICS (PAC-12)
- NO HEATING
- SW CORNER WALLS SEEP / SOAKS THRU CMU.
- + REPLACE CABE W/ REAL STORAGE
- 9-10 Bull carts / 2 SWEEPERS.
NEED DEDICATED INDOOR SWEEPER

~~2500 SF STORAGE~~
~~1000 SF STORAGE~~
NEED POWER.

TENNIS

3 of 3

